



Решения Cisco Business для SMB

Сергей Синельник
Системный инженер
sergii.synelnyk@muk.ua



О чем поговорим?

01. Обновленное портфолио

02. Cisco Business Switch

03. Cisco Business Router

04. Cisco Business Wireless

05. Cisco Mobile App & Business
Dashboard

06. Вопросы

Портофолио Cisco Business

1



Cisco's New Global "Storefront"
Brand for Our Digital Experience

Portfolio Brand

2



Product Line / Model Naming [rolled out over FY20-21]

3

Cisco Business
<ul style="list-style-type: none">• Cisco Business Wireless (CBW) - done• Cisco Business Dashboard (CBD) - today• Cisco Business Switches (CBS) - today• Cisco Business WAN Gateway Router (CBR)

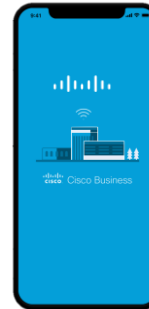
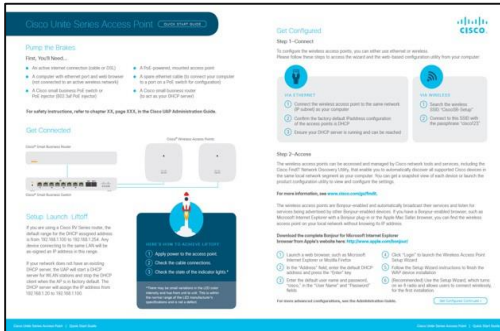
Новое представление



Documentation


Product

Packaging



Cisco Business Wireless Product Packaging

Front View of Packaging

 Cisco Business 240AC Access Point

Simple + Flexible + Secure

Cisco Business 240AC Access Point **Limited Lifetime Hardware Warranty**

Live Technical Support:
Phone: cisco.com/go/cbphone
Chat: cisco.com/go/cbchat
Community: cisco.com/go/cbcommunity

Printed in China PRC Your Trusted Guide

55-100124-01

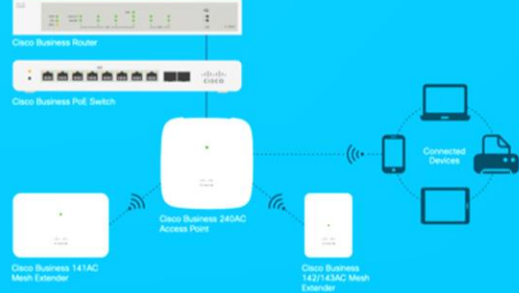
Side 1

Rear View of Packaging

It's Better Together

Works with Cisco Business Dashboard*
• Multi-Site Remote Network Management and Monitoring made easy
• Lifecycle Management and Reporting
• Zero Touch Provisioning
*View Issues

Cisco Business app*
• Simplified Setup, Monitoring, and Troubleshooting
• Works with iOS and Android



Looking for more information about your Cisco Business Wireless product?
cisco.com/go/cbw240ac
← Not a fan of typing? Snap me instead.

CX Cisco Customer Experience
Your Trusted Guide

Cisco Business 240AC Access Point

WHAT'S INSIDE

- Sleek design with Dual Ports
- Powered via 802.3af
- 4x4 Wave 2 MU-MIMO
- Mesh Capability

Cisco Business Products - Network of Possibilities

SWITCHING | ROUTING | WIRELESS

For more information on other Cisco Business products please visit cisco.com/go/cisobusiness

Access Point, Mounting Kit, Ethernet Cable, Documentation

Side 2

What's inside the box? CBW240AC Access Point

Side of Packaging

WHAT'S INSIDE

- Access Point
- Mounting Kit
- Ethernet Cable
- Documentation

Quick Start Guide



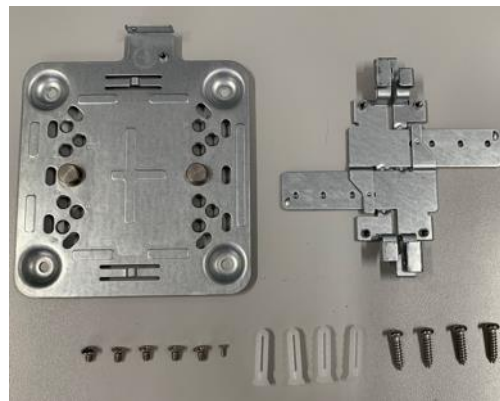
The Quick Start Guide for the Cisco Business 240AC Access Point includes the following sections:

- What's in the Box:**
 - Cisco Business 240AC Access Point
 - Quick Start Guide
 - Ethernet Cable
 - Mounting Kit
 - Technical Support Contact List
 - Product Card (Printed)
 - Compliance Information (for EU SKUs only)
- Product Features:**
 1. Status LED
 2. PoE In-Port (Ethernet Uplink Port)
 3. Ethernet Out-Port
 4. RJ-45 Console Port
 5. PoE Out-Port (PoE)
 6. USB 2.0 Port (For future use)
 7. Wipe Button
 8. Security Service Proxy
 9. Mounting Brackets
- Get, You'll Need:**
 - An active internet connection (cable or DSL)
 - A computer that is dual-band capable (not compatible to an active wireless network)
 - A PoE switch, router or injector (IEEE 802.3af PoE required)
 - A power supply for your DHCP Server

Access Point



Mounting Kit: Bracket, T-bar adapter, screws/anchors



Обновленное портфолио Cisco business Cisco Business

Cisco Business Dashboard

Automates the deployment, monitoring, and lifecycle management of Cisco Business devices



Cisco Business Switch

Reliable building block for any small business network



350 Series Managed Switches



250 Series Smart Switches



110 Series Unmanaged Switches

Cisco Business Wireless

Enterprise class access points and mesh extenders at small business price



140AC Access Point



145AC Access Point



240AC Access Point



141ACM Mesh Extender



142ACM Mesh Extender



143ACM Mesh Extender

Cisco Business Router

Secure connectivity with integrated wireless and PoE



RV160/160W



RV260/RV260P/RV260W



RV340/RV340W



RV345/RV345P

Cisco Support Services



Limited lifetime warranty



Software updates



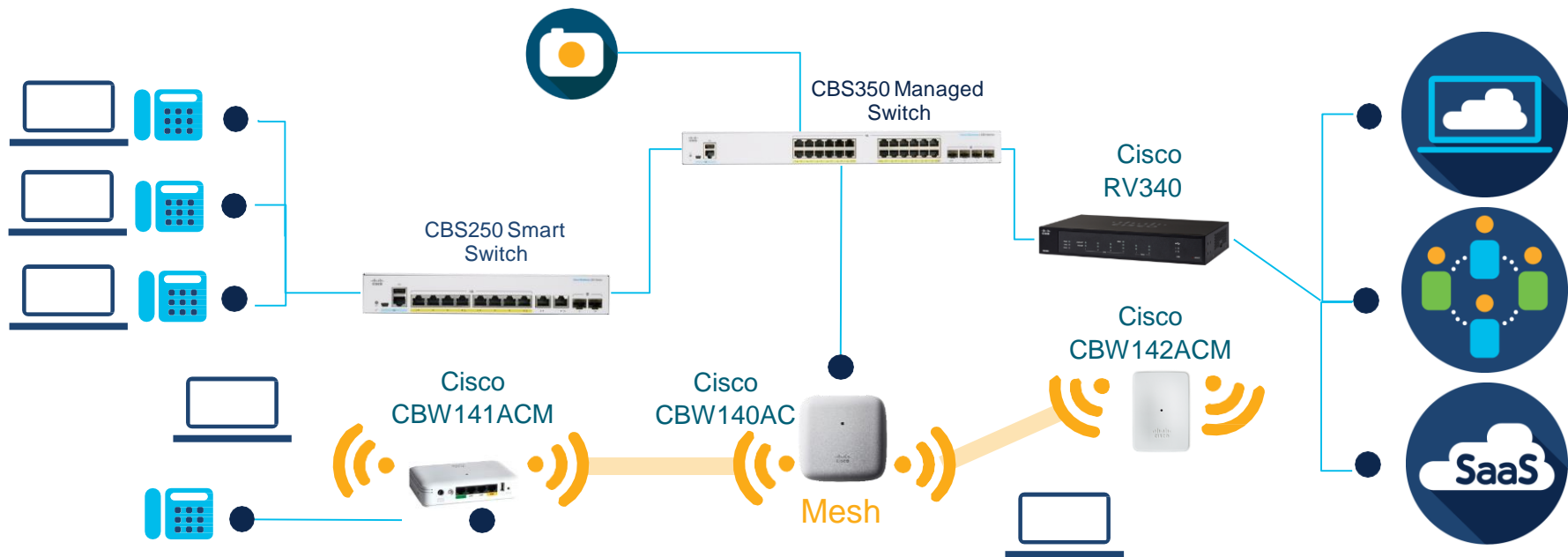
24/7 support



Online community and knowledge base



Диаграмма построения сети Small Business



Creates a reliable
small business
local area network

Easily integrates with
data, voice, video, and
wireless products

Easy to use, with a consistent
interface across all Cisco
Small Business products

Представляем коммутаторы Cisco Business



Простота

Flexible management with web-based tool or Cisco Business Dashboard. Auto discovery for easy integration with Collab and Wi-Fi products



Гибкость

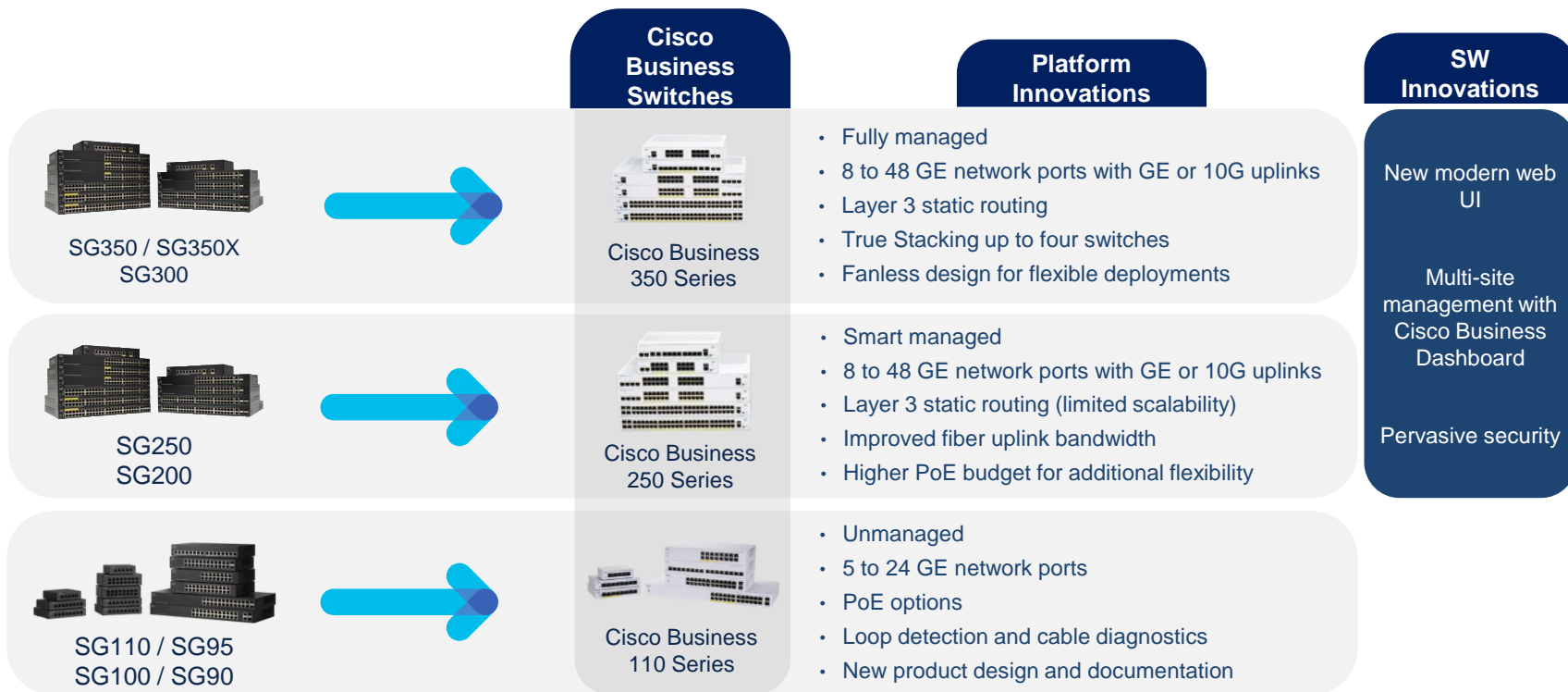
Ultimate business flexibility with 8 to 48 ports of Gigabit Ethernet connectivity, Gigabit or 10-Gigabit uplinks, and PoE+ support.



Безопасность

Advanced security protocols provides a solid security foundation, ensuring privacy and business continuity

Миграция коммутаторов Cisco Business



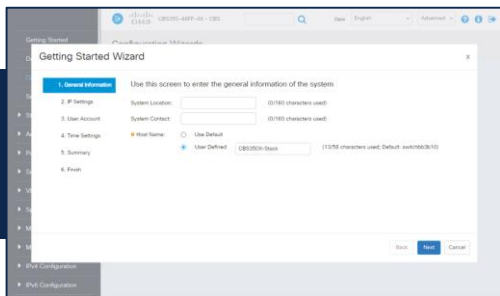
Сравнение коммутаторов Cisco Business



	CBS110 Series	CBS250 Series	CBS350 Series
Switch management	Unmanaged	Smart managed	Fully managed
Configuration	5 to 24 GE network ports	8 to 48 GE network ports with GE or 10G uplinks	8 to 48 GE network ports with GE or 10G uplinks
Power over Ethernet (PoE)	PoE up to 100W	PoE+ up to 370W	PoE+ up to 740W
Stacking	No	No	Stackable up to 4 units (10G uplinks models)
Layer 3	No	Layer 3 static routing (limited scalability)	Layer 3 static routing
Scalability	8K MAC address	8K MAC address 255 VLAN 32 IPv4 routes	16K MAC address 4K VLAN 990 IPv4 routes
Security	Loop detection, cable diagnostics, Kensington security slot	802.1X basic, ACL support, storm control, DoS prevention	802.1X including Dynamic VLAN (DVA), web-based authentication, MAC authentication, private VLAN, IPv6 First Hop Security, DHCP Snooping, IP Source Guard, dynamic ARP inspection, ACL support, storm control, DoS prevention
Network management	Plug and play	Cisco Business Dashboard Cisco network PnP for zero touch deployment	Cisco Business Dashboard Cisco network PnP for zero touch deployment
Warranty	Limited lifetime with return to factory replacement	Limited lifetime with return to factory replacement	Enhanced limited lifetime with next business day advance replacement where available

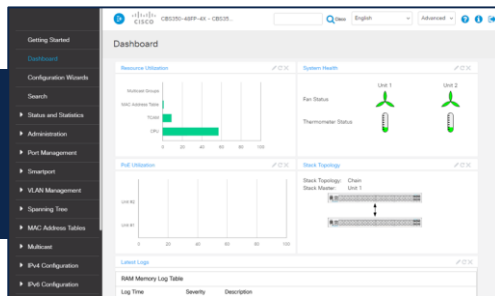
Интуитивно-понятное встроенное управление

Available in English, Japanese and Chinese



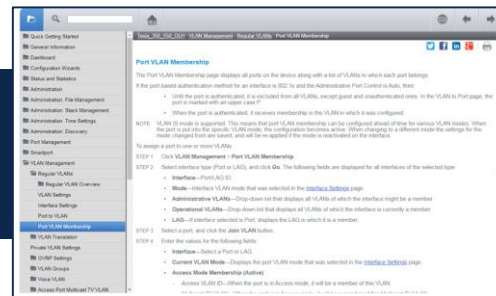
Configuration Wizards

- Quick and easy to set up the device
- Ensure best practice like password complexity is applied



Dashboard

- Single screen to monitor health statistics
- Customizable to show the most relevant information users need



Integrated Help

- Search any keywords to find related configuration options
- Click ? to get context-aware help

USB port для быстрой настройки или обновления

Примеры использования

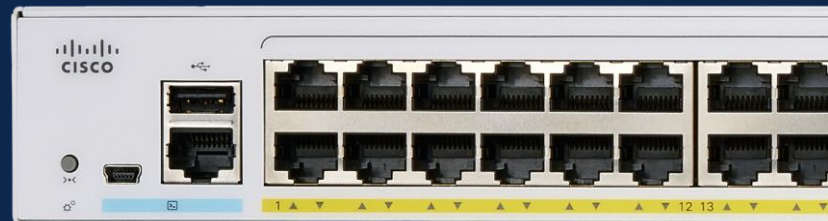


Backing up
configuration/image/localization files

Loading new
configuration/image/localization files

Copying log files and other
file copy operations

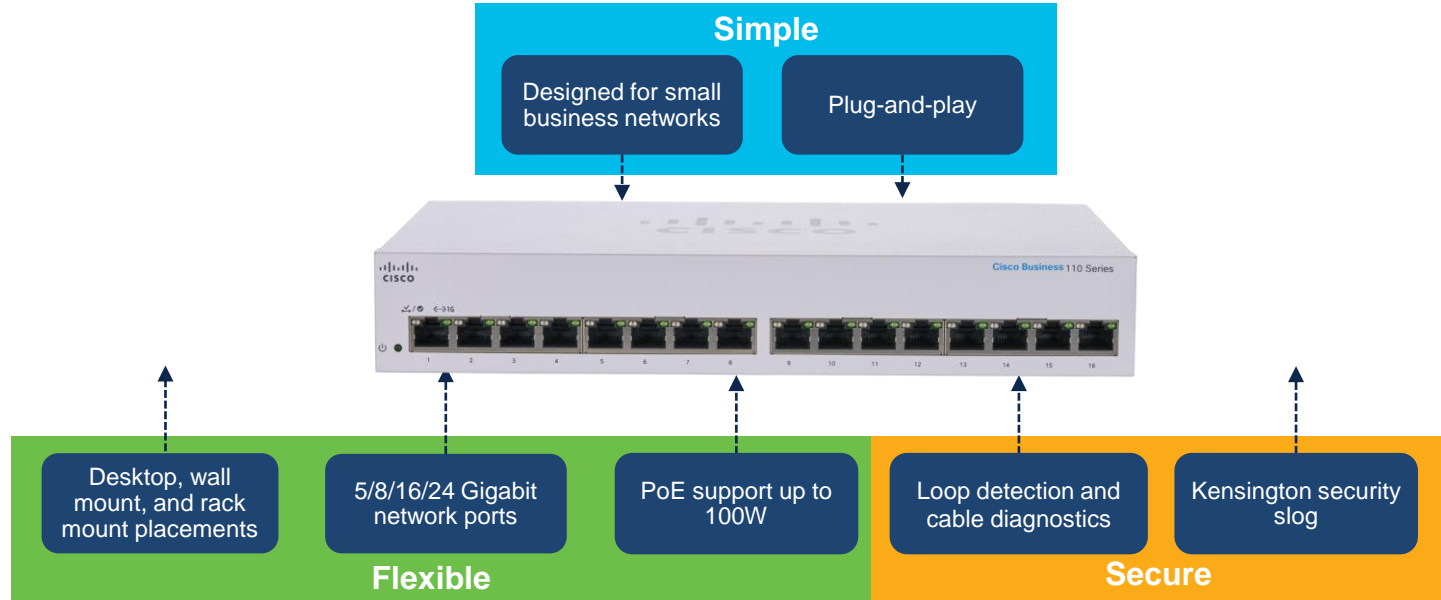
Located on the on the left side
of the switch front panel



Connected flash storage can
be controlled via device file system

In a stack, only the master's USB port is active

Cisco Business 110 Series Unmanaged Switches



Plug-and-play without prior IT knowledge

Cisco Business Switches 110 Series

5 and 8 Port Models



5 Port Data with external power supply



8 Port Data with external power supply



8 Port PoE (32W) with external power supply

16 and 24 Port Models



16 Port Data

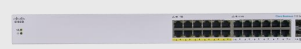


16 Port PoE (64W)

2x 1G SFP uplinks



24 Port Data



24 Port PoE (100W)

Cisco Business Switch Highlights

Plug and play

Power over Ethernet support

Desktop and rack mount placement

Fanless design

Metal casing

Integrated QoS support

Loop detection

Cable diagnostics

Energy Efficient Ethernet (EEE)

Limited lifetime warranty



Простота



Гибкость



Безопасность

Cisco Business 110 Series Unmanaged Switches

Gigabit Ethernet



CBS110-5T-D

5x GE ports
Desktop placement
External power supply



CBS110-8T-D

8x GE ports
Desktop placement
External power supply



CBS110-16T

16x GE ports
External power supply



CBS110-24T

24x GE ports
2x SFP (combo with 2x GE)
Internal power supply



CBS110-8PP-D

8x GE ports (4 support PoE)
32W PoE budget
Desktop placement
External power supply



CBS110-16PP

16x GE ports (8 support PoE)
64W PoE budget
Internal power supply

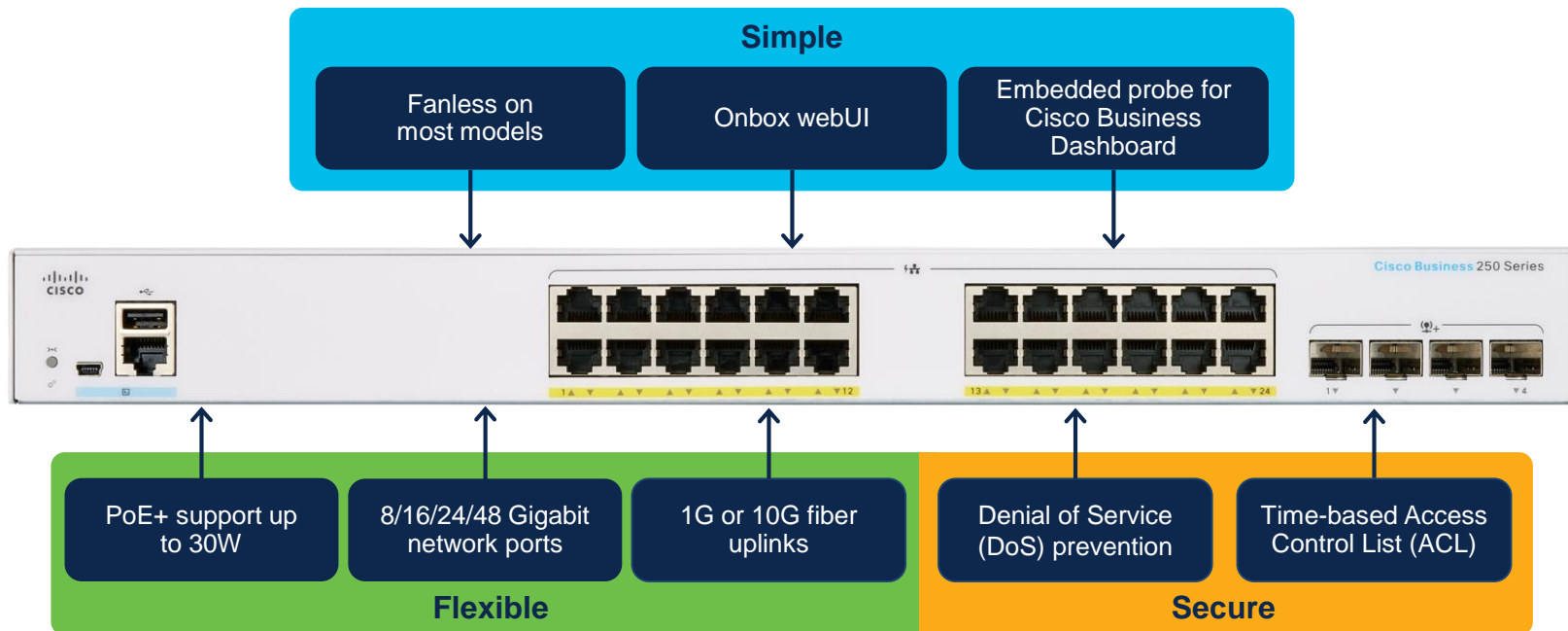


CBS110-24PP

24x GE ports (12 support PoE)
2 x SFP (combo with 2x GE)
100W PoE budget
Internal power supply

Model	Power Budget	PoE Ports	PoE Standard
CBS110-8PP-D	32 watts	4	802.3af
CBS110-16PP	64 watts	8	802.3af
CBS110-24PP	100 watts	16	802.3af

Cisco Business 250 Series Smart Switches



Доступные интеллектуальные коммутаторы, сочетающие высокую производительность и надежность

Cisco Business 250 Series Smart Switches

Простая в использовании бизнес-сеть по доступной цене

8 and 16 Port Models

2x 1G SFP/RJ45 uplinks (combo)



8 Port Data with external power supply



8 Port Partial PoE (45W), PoE (67W) and Full PoE (120W) with external power supply

2x 1G SFP uplinks



16 Port Data



16 Port PoE (120W)

24 and 48 Port Models

4x 1G SFP uplinks



24 Port Data, Partial PoE (100W), PoE (195W) and Full PoE (370W)



48 Port Data, Partial PoE (195W) and PoE (370W)

4x 10G SFP+ uplinks



24 Port Data, PoE (195W) and Full PoE (370W)



48 Port Data and PoE (370W)

Cisco Business Switch highlights

- Fanless*, compact form factor
- Rich port and PoE combinations
- Intuitive on-device web UI
- Cisco Business Dashboard support
- Cisco Network PnP deployment
- Layer 2 switching
- Layer 3 static routing
- Built-in security
- Environmental resiliency
- Limited lifetime warranty



Простота



Гибкость



Безопасность

* All except 24 Port Full PoE and 48 Port models

Cisco Business 250 Series Smart Switches



CBS250-8T-E-2G

8x GE ports + 2x GE combo
External power supply



CBS250-16T-2G

16x GE ports + 2x SFP
Internal power supply



CBS250-24T-4G

24x GE ports + 4x SFP
Internal power supply



CBS250-48T-4G

48x GE ports + 4x SFP
Internal power supply

Gigabit Ethernet



CBS250-8PP-E-2G

CBS250-8P-E-2G

CBS250-8FP-E-2G

8x GE PoE+ ports + 2x GE combo
45W/67W/120W PoE budget
External power supply



CBS250-16P-2G

16x GE PoE+ ports + 2 x SFP
120W PoE budget
Internal power supply



CBS250-24PP-4G

CBS250-24P-4G

CBS250-24FP-4G

24x GE PoE+ ports + 4x SFP
100W/195W/370W PoE budget
Internal power supply



CBS250-48PP-4G

CBS250-48P-4G

48x GE PoE+ ports + 4x SFP
195W/370W PoE budget
Internal power supply

Cisco Business 250 Series Smart Switches



CBS250-24T-4X

24x GE ports + 4x SFP+
Internal power supply



CBS250-48T-4X

48x GE ports + 4x SFP+
Internal power supply

**Gigabit Ethernet
with 10G Uplinks**



CBS250-24P-4X

CBS250-24FP-4X

24x GE PoE+ ports + 4x SFP+
195W/370W PoE budget
Internal power supply



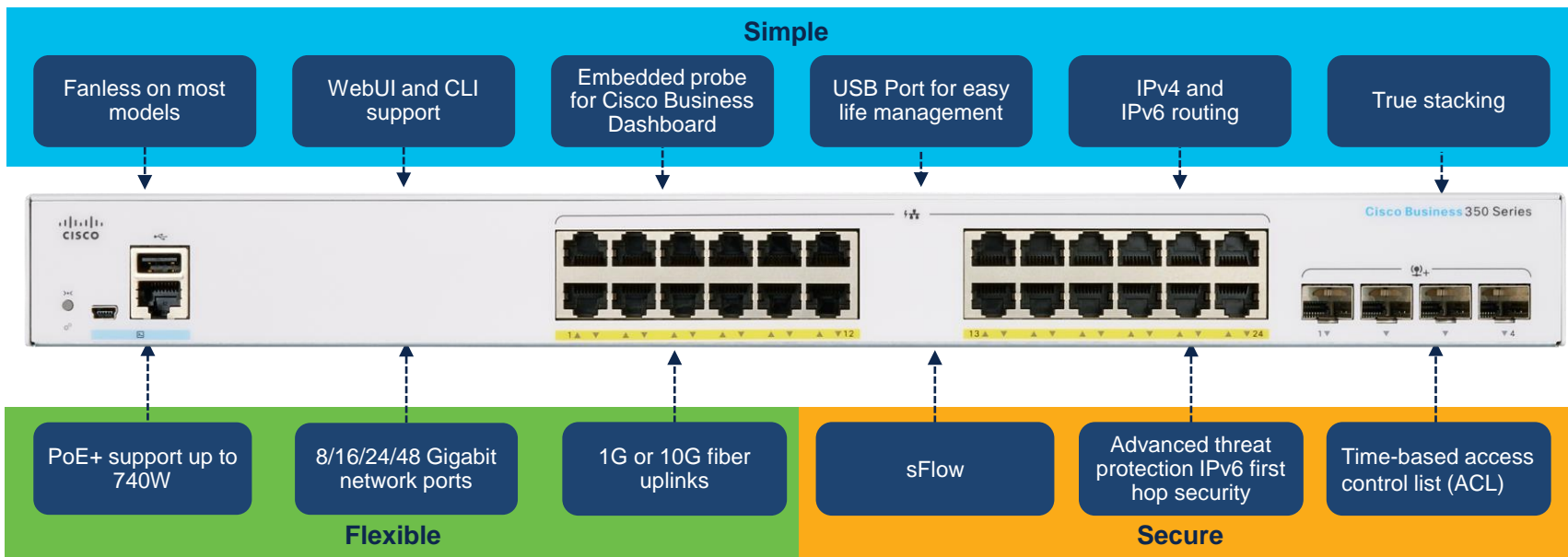
CBS250-48P-4X

48x GE PoE+ ports + 4x SFP+
370W budget
Internal power supply

Power over Ethernet models – CBS250

Model	Power Budget	PoE Ports	PoE Standard
CBS250-8PP-E-2G	45 watts	8	802.3af/at
CBS250-8P-E-2G	67 watts	8	802.3af/at
CBS250-8FP-E-2G	120 watts	8	802.3af/at
CBS250-16P-2G	120 watts	16	802.3af/at
CBS250-24PP-4G	100 watts	24	802.3af/at
CBS250-24P-4G	195 watts	24	802.3af/at
CBS250-24FP-4G	370 watts	24	802.3af/at
CBS250-48PP-4G	195 watts	48	802.3af/at
CBS250-48P-4G	370 watts	48	802.3af/at
CBS250-24P-4X	195 watts	24	802.3af/at
CBS250-24FP-4X	370 watts	24	802.3af/at
CBS250-48P-4X	370 watts	48	802.3af/at

Cisco Business 350 Series Managed Switches



Важный элемент для построения любой сети малого бизнеса

Cisco Business 350 Series Managed Switches

Ключевой элемент для построения сети малого бизнеса

8 and 16 Port Models

2x 1G SFP/RJ45 uplinks (combo)



8 Port PoE (67W) and Full PoE (120W)

8 Port Data, PoE (67W) and Full PoE (120W) with external power supply

2x 1G SFP uplinks



16 Port Data, PoE (120W) and Full PoE (240W)

16 Port Data and PoE (120W) with external power supply

24 and 48 Port Models

4x 1G SFP uplinks



24 Port Data, PoE (195W) and Full PoE (370W)

48 Port Data, PoE (370W) and Full PoE (740W)

4x 10G SFP+ uplinks



24 Port Data, PoE (195W) and Full PoE (370W)

48 Port Data, PoE (370W) and Full PoE (740W)

Cisco Business Switch highlights

Fanless*, compact form factor

Rich port and PoE combinations

Cisco Business Dashboard support

Cisco Network PnP deployment

Intuitive on-device web UI

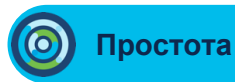
True stacking on select models

Advanced L2 and L3 switching

Built-in advanced security

Environmental resiliency

Enhanced limited lifetime warranty



Простота



Гибкость



Безопасность

* All except 24 Port Full PoE and 48 Port models

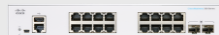
Cisco Business 350 Series Managed Switches

Gigabit Ethernet



CBS350-8T-E-2G

8x GE ports + 2x GE combo
External power supply



CBS350-16T-2G

CBS350-16T-E-2G

16x GE ports + 2x SFP
Internal or external power supply



CBS350-24T-4G

24x GE ports + 4x SFP
Internal power supply



CBS350-48T-4G

48x GE ports + 4x SFP
Internal power supply



CBS350-8P-2G

CBS350-8P-E-2G

CBS350-8FP-2G

CBS350-8FP-E-2G

8x GE PoE+ ports + 2x GE combo
67W/120W PoE budget
Internal or external power supply



CBS350-16P-2G

CBS350-16P-E-2G

CBS350-16FP-2G

16x GE PoE+ ports + 2 x SFP
120W/240W PoE budget
Internal or external power supply



CBS350-24P-4G

CBS350-24FP-4G

24x GE PoE+ ports + 4x SFP
195W/370W PoE budget
Internal power supply



CBS350-48P-4G

CBS350-48FP-4G

48x GE PoE+ ports + 4x SFP
370W/740W PoE budget
Internal power supply

Cisco Business 350 Series Managed Switches

Gigabit Ethernet with 10G Uplinks



CBS350-24T-4X

24x GE ports + 4x SFP+
Internal power supply



CBS350-48T-4X

48x GE ports + 4x SFP+
Internal power supply



CBS350-24P-4X

CBS350-24FP-4X

24x GE PoE+ ports + 4x SFP+
195W/370W PoE budget
Internal power supply



CBS350-48P-4X

CBS350-48FP-4X

48x GE PoE+ ports + 4x SFP+
370W/740W PoE budget
Internal power supply

Power over Ethernet models – CBS350

Model	Power Budget	PoE Ports	PoE Standard
CBS350-8P-2G	67 watts	8	802.3af/at
CBS350-8P-E-2G	67 watts	8	802.3af/at
CBS350-8FP-2G	120 watts	8	802.3af/at
CBS350-8FP-E-2G	120 watts	8	802.3af/at
CBS350-16P-2G	120 watts	16	802.3af/at
CBS350-16P-E-2G	120 watts	16	802.3af/at
CBS350-16FP-2G	240 watts	16	802.3af/at
CBS350-24P-4G	195 watts	24	802.3af/at
CBS350-24FP-4G	370 watts	24	802.3af/at
CBS350-48P-4G	370 watts	48	802.3af/at
CBS350-48FP-4G	740 watts	48	802.3af/at
CBS350-24P-4X	195 watts	24	802.3af/at
CBS350-24FP-4X	370 watts	24	802.3af/at
CBS350-48P-4X	370 watts	48	802.3af/at
CBS350-48FP-4X	740 watts	48	802.3af/at

Комплексные преимущества для малого бизнеса

- Static layer 3 routing
- Policy-based routing
- Stackable to 4 units (10G uplink models)
- sFlow
- Remote Switch Port Analyzer
- Ingress and egress access control lists (ACLs) and QoS
- Flow-based mirroring, redirection, and quality of service
- STP, RSTP, MSTP, PVST+ and RPVST+ support



Истинное стекирование, а не кластеризация



Up to four Cisco Business 350 Switches with 10G uplinks



Mix and match 24 to 48 ports, and PoE+ combinations



Unified management, control and traffic forwarding

Switch accessories

Small Form-Factor Pluggable (SFP)

Gigabit transceivers



MGBSX1

1000BASE-SX SFP transceiver

- 850-nm wavelength for multimode fiber
- For distances up to 500 meters



MGBLX1

1000BASE-LX SFP transceiver

- 1310-nm wavelength for single-mode fiber
- For distances up to 10 kilometers



MGBLH1

1000BASE-LH SFP transceiver

- 1310-nm wavelength for single-mode fiber
- For distances up to 40 kilometers



MGBT1

1000BASE-T SFP transceiver

- For Category 5e Unshielded Twisted Pair (UTP) copper wire
- For distances up to 100 meters

Switch accessories

10 GE SFP+ modules

10 GE Fiber transceivers

SFP-10G-SR

10 GE SFP+ transceiver



- 850-nm wavelength for multi-mode fiber
- For distances up to 400 meters

SFP-10G-LR

10 GE SFP+ transceiver



- 1310-nm wavelength for single-mode fiber
- For distances up to 10 kilometers

SFP-10G-SR-S

10 GE SFP+ transceiver



- 850-nm wavelength for multi-mode fiber
- For distances up to 400 meters

SFP-10G-LR-S

10 GE SFP+ transceiver



- 1310-nm wavelength for single-mode fiber
- For distances up to 10 kilometers

10 GE Direct attach cable

SFP-H10GB-CU1M

10 GE SFP+ transceiver

- Twinax cable, passive, 30 AWG cable
- 1 meter



SFP-H10GB-CU3M

10 GE SFP+ transceiver

- Twinax cable, passive, 30 AWG cable
- 3 meters



SFP-H10GB-CU5M

10 GE SFP+ transceiver

- Twinax cable, passive, 30 AWG cable
- 5 meters



Cisco Business Routers



	RV160/160W	RV260/P/W	RV340/340W	RV345/345P
Use For	SoHo / SB	SB / SMB	SB / SMB / Back Office	SB / SMB / Back Office
Mounting	Desktop, Wall Mount (W)	Desktop, Rack Mount, Wall Mount (W)	Desktop, Wall Mount, Rack Mount	Desktop, Wall Mount, Rack Mount
Data Rate	600 Mbps	800 Mbps	980 Mbps	980 Mbps
LAN Ports	4	8	4	16
PoE Ports	-	4	-	8
Security	VPN, Firewall, NAT	VPN, Firewall, NAT	Umbrella, VPN, Firewall, NAT, Antivirus	Umbrella, VPN, Firewall, NAT, Antivirus
Features	QoS, Port Forwarding	QoS, Port Forwarding	Content Filtering, QoS, Port Forwarding	Content Filtering, QoS, Port Forwarding

Примеры использования

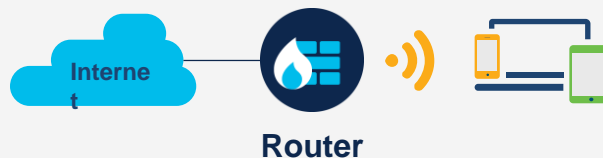
Small/Home office

Size: 140 m² (1,500 ft²)

Users: 1–4

Needs:

- Easy to install / easy to manage
- All wireless connectivity



RV160W

Good option

- Setup wizard
- 600 Mbps data rate
- VPN, Firewall, Network Address Translation (NAT)



RV260W

Best option

- Same functionality as RV160
- 800 Mbps data rate
- 8 LAN ports



1

2

Примеры использования

Medium office

Size: 185 m² (2,000 ft²)

Users: 5-19

Needs:

- An AP for broader coverage
- All wireless connectivity



RV260P

Good option



- 4 PoE ports for Access Point connection
- 8 LAN ports
- 800 Mbps data rate

RV345P

Best option



- Same functionality as RV260P
- 16 LAN ports, 8 PoE ports
- Umbrella, VPN, Network Address Translation (NAT), Firewall, Web Filtering

1

2

Примеры использования

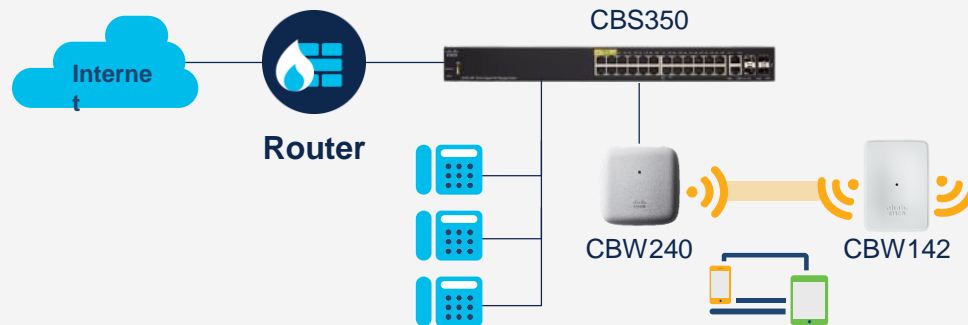
Large office

Size: 280 m² (3,000 ft²)

Users: 20+

Needs:

- Multiple APs for complete coverage
- Ports for wired devices (APs, phones, cameras)
- Additional security for IOT and BYOD devices



RV340

Good option



- Umbrella, VPN, Network Address Translation (NAT), Firewall, Web Filtering
- Content Filtering
- 4 LAN Ports

RV345

Best option



- Same functionality as RV340
- 16 LAN Ports
- 8 PoE Ports

1

2

All Access Point models feature 802.11ac Wave 2 capabilities



Indoor Wi-Fi coverage throughout the Small Business workplace



Converged access for for small hospitality and private schools, w/ power for IP phone



High-Performance Wi-Fi for Small Offices, Enhanced coverage & range

Cisco Business Wireless: Точки доступа



	CBW140AC Access Point	CBW240AC Access Point	CBW145AC Access Point
Best For	SoHo / SB	SB / SMB	SB / SMB / Back Office
Mounting	Ceiling & T-bar / Wall Mounting Kit included	Ceiling & T-bar / Wall Mounting Kit included	Wall / Wall Plate Mounting Kit included
Maximum data rate	867Mbps	1733Mbps	867Mbps
Antennas Spatial streams	2X2:2SS – 80 MHz	4X4:4SS – 80 MHz	2X2:2SS – 80 MHz
MU-MIMO	✓	✓	✓
Max Tx Output Power (5GHz)	20 dBm	23 dBm	20 dBm
Number of Wired Ports	1 GbE	2 GbE	4 GbE (1 PoE PSE) Includes pass-thru port
Security	WPA/WPA2, WPA3 , WPA2-Enterprise, RADIUS Server	WPA/WPA2, WPA3 , WPA2-Enterprise, RADIUS Server	WPA/WPA2, WPA3 , WPA2-Enterprise, RADIUS Server
PoE requirement & Power Draw	802.3af, 8.3W	802.3af, 13.2W	802.3af, 8.5W 803.3at required for PSE
Dimensions	6 x 6 x 1.3 in (150.8 x 150.8 x 33 mm)	7 x 7 x 1.5 in (177.8 x 177.8 x 38 mm)	3.5 x 5.5 x 1.25 in (89 x 140 x 31.5 mm)
Also sold as Multipacks (Qty of 3 & 5)	✓	✓	

All Access Point models feature 802.11ac Wave 2 capabilities



Converged access for an office suite,
Can provide power to an IP phone or camera



Enhanced Wi-Fi coverage for mobile devices,
Plugs directly into AC power outlet



Enhanced Wi-Fi coverage for both mobile clients
& a stationary wired device

Cisco Business Wireless: Mesh Extenders



	CBW141ACM Mesh Extender	CBW142ACM Mesh Extender	CBW143ACM Mesh Extender
Best For	SoHo / SB / SMB	SoHo / SB / SMB	SoHo / SB / SMB
Mounting/Placement	Desktop	Direct to Power Outlet	Wall
Maximum data rate	867Mbps	867Mbps	867Mbps
Antennas Spatial streams	2X2:2SS – 80 MHz	2X2:2SS – 80 MHz	2X2:2SS – 80 MHz
MU-MIMO	✓	✓	✓
Max Tx Output Power (5GHz)	20 dBm	20 dBm	20 dBm
Number of Wired LAN Ports	4 GbE (1 PoE PSE)	None	1 GbE downlink
Security	WPA/WPA2, WPA3 , WPA2-Enterprise, RADIUS Server	WPA/WPA2, WPA3, WPA2-Enterprise, RADIUS Server	WPA/WPA2, WPA3, WPA2-Enterprise, RADIUS Server
Power	DC Power Adapter, included	Connects directly to AC Outlet	DC Wall Plug Power Adapter, included
Dimensions	6 x 4 x 1.5 in (152.4 x 101.6 x 37.7mm)	3.5 x 5.5 x 1.25 in (89 x 140 x 31.5 mm)	3.5 x 5.5 x 1.25 in (89 x 140 x 31.5 mm)

Cisco Business Indoor Access Points



	140AC Access Point	240AC Access Point	145AC Access Point	141ACM Mesh Extender	142ACM Mesh Extender	143ACM Mesh Extender
Best Used for	Indoor Wi-Fi coverage throughout the Small Business workplace	High-Performance Wi-Fi coverage for Small Offices, Enhanced range	Converged access for for small hospitality and private schools, w/ power for IP phone	Converged access for an office suite, & power for an IP phone or camera	Extending Wi-Fi coverage for mobile devices, plug into AC Outlet	Extending Wi-Fi coverage for both clients & a stationary wired device
Mounting & Placement	Ceiling & T-bar / Wall Mounting Kit included	Ceiling & T-bar / Wall Mounting Kit included	Wall / Wall Plate Mounting Kit included	Desktop	Direct to Power Outlet	Wall Mounting Kit included
Max 11ac Data Rate	867Mbps	1733Mbps	867Mbps	867Mbps	867Mbps	867Mbps
Antennas Spatial streams	2X2:2SS – 80 MHz	4X4:3SS – 80 MHz	2X2:2SS – 80 MHz	2X2:2SS – 80 MHz	2X2:2SS – 80 MHz	2X2:2SS – 80 MHz
Max Tx Output Power (5GHz)	20 dBm	23 dBm	20 dBm	20 dBm	20 dBm	20 dBm
MU-MIMO	✓	✓	✓	✓	✓	
Wireless Security	WPA, WPA2/WA3WPA2-Enterprise, RADIUS Server	WPA, WPA2/WA3WPA2-Enterprise, RADIUS Server	WPA, WPA2/WA3WPA2-Enterprise, RADIUS Server	WPA, WPA2/WA3WPA2-Enterprise, RADIUS Server	WPA, WPA2/WA3WPA2-Enterprise, RADIUS Server	WPA, WPA2/WA3WPA2-Enterprise, RADIUS Server
Wired LAN Ports	1 GbE	2 GbE	4 GbE (1 PoE PSE)	4 GbE (1 PoE PSE)	None	1 GbE downlink
Power	PoE Only - 802.3af	PoE Only - 802.3af	802.3af, 803.3at for PSE	DC Power Adapter Included	DC Wall Plug Power Adapter	Connects directly to an AC Outlet
Dimensions	6 x 6 x 1.3 in (150.8 x 150.8 x 33 mm)	7 x 7 x 1.5 in (177.8 x 177.8 x 38 mm)	3.5 x 5.5 x 1.25 in (89 x 140 x 31.5 mm)	6 x 4 x 1.5 in (152.4 x 101.6 x 37.7mm)	3.5 x 5.5 x 1.25 in (89 x 140 x 31.5 mm)	3.5 x 5.5 x 1.25 in (89 x 140 x 31.5 mm)
Available in 3 & 5 packs	✓	✓	-	-	-	-

Mesh Extender* примеры крепления

CBW141ACM Mesh Extender

Supports 3 Wired Ports



Power a Phone via PoE



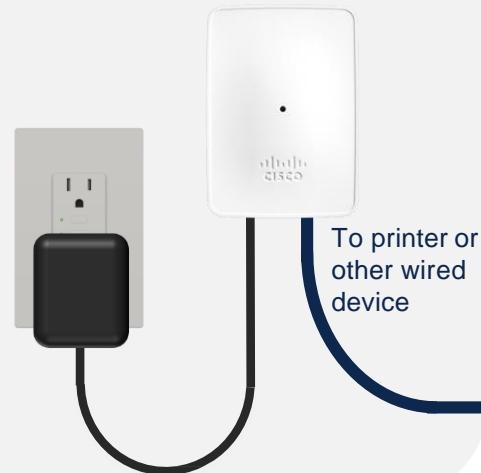
CBW142ACM Mesh Extender

Plug in directly to AC Outlet
No mounting



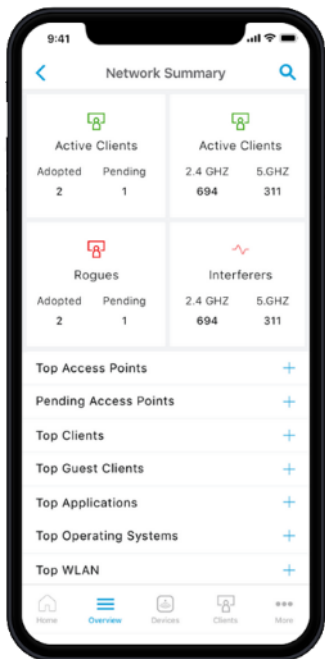
CBW143ACM Mesh Extender

Supports 1 Wired Downlink
Bridge a wired device or switch



*Requires CBW Access Point

Cisco Business Mobile App



Google Play

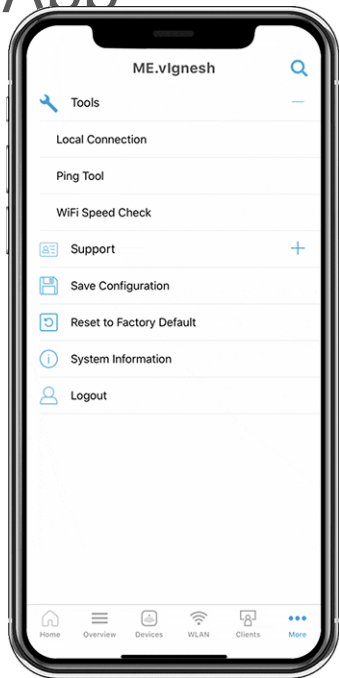


App Store



- Упрощенное беспроводное управление
- Быстрый анализ сети
- Мониторинг производительности сети
- Доступно в Apple App Store & Google Play

Управление Cisco Business - Cisco Business Mobile App



Быстрая настройка

Сканируйте QR код для добавления и настройки ваших точек доступа Cisco Business в считанные минуты.

Простота в управлении

Отображение, изменение конфигурации, а также резервное копирование настроек прямо с вашего телефона.

Делитесь сетью с легкостью

Мгновенно предоставляйте доступ к вашей гостевой сети прямо с телефона. Определяйте, каким устройствам предоставить большую скорость.

Сеть как на ладони

Информация об использовании сети, трафике и оповещения в реальном времени.

Мониторинг производительности

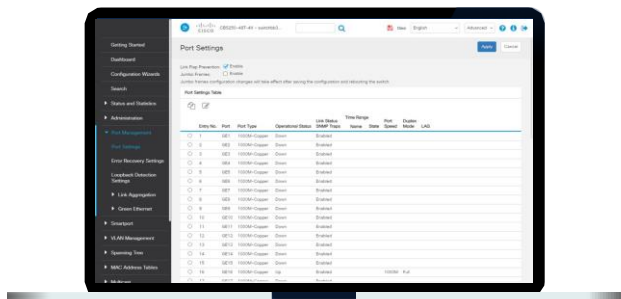
Отслеживайте производительность и пропускную способность вашей сети благодаря встроенным инструментам.

Гибкость

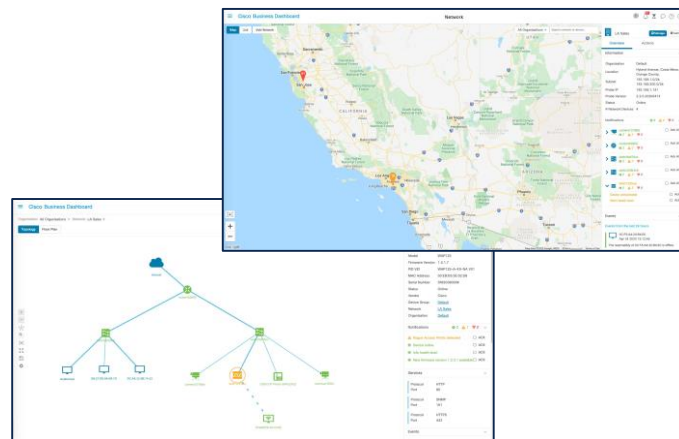
Объединяйте и сочетайте точки доступа Cisco Business с сетевыми расширителями «mesh extenders».

Гибкое управление

Встроенный Web UI



Multi-Site Management



Удовлетворение потребностей управления для SMB

Cisco Business Dashboard

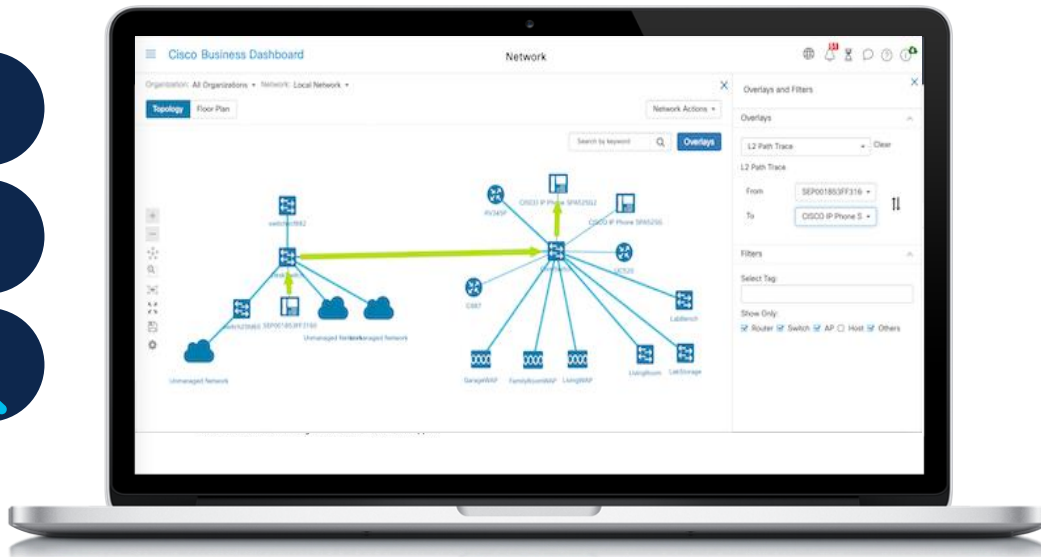
Intuitive interface



Zero touch deployment (PnP)



Network monitoring



Configuration and management



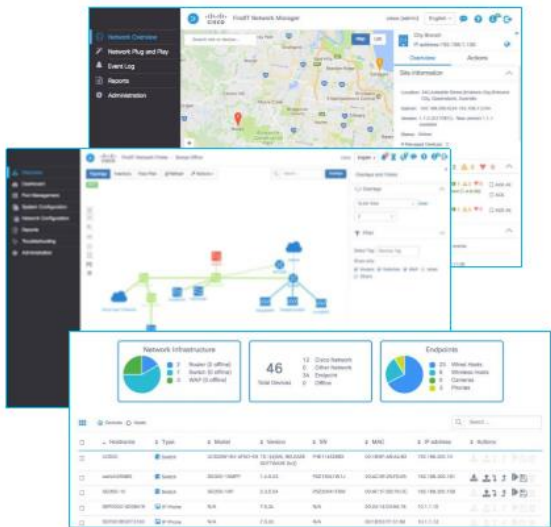
On-prem or cloud



For all Cisco Business products



Управление Cisco Business Dashboard



[Cisco Business Dashboard demo](#)

Обнаружение и визуализация

- Автоматическое обнаружение сети
- Сведения об устройстве
- Топология сети
- Работоспособность сети
- Понятный интерфейс

Мониторинг

- Мониторинг работы сети в режиме реального времени
- Индивидуальная настройка для отображения требуемых параметров

Отчет

- Отчетность об окончании срока службы и поддержке
- Интеграция с Cisco® Active Advisor для дополнительных инструментов управления жизненным циклом

Конфигурация

- Единая точка для общей конфигурации
- Сети VLAN и WLAN
- Конфигурация системы
- Порты коммутатора
- Сетевая конфигурация – единократная настройка всех устройств

Эксплуатация

- Один клик для выполнения стандартных операций
- Встроенное программное обеспечение
- Конфигурация резервного копирования/восстановления/сохранения
- Перегрузка
- Получение уведомлений о важных событиях

Лицензирование

- Cisco Business Dashboard требует лицензии (до 10 устройств бесплатно)
- Лицензирование на основе управляемых устройств
- Учитываются только продукты Cisco® серий с 100 по 500
- Используется для Network Manager и всех датчиков в сети
- Включает телефонную поддержку для программного обеспечения Cisco Business Dashboard



Вопросы

Сергей Синельник
Системный инженер
sergii.synelnyk@muk.ua

